

New ASME FMC Rules

2019 ASME BPVC

2019 ASME BPVC, Sec. V, Article 4. July 1, 2019

- *Mandatory Appendix XI Full Matrix Capture (FMC)*
- *Nonmandatory Appendix F Examination of Welds Using Full Matrix Capture (FMC)*

What's different from PAUT?

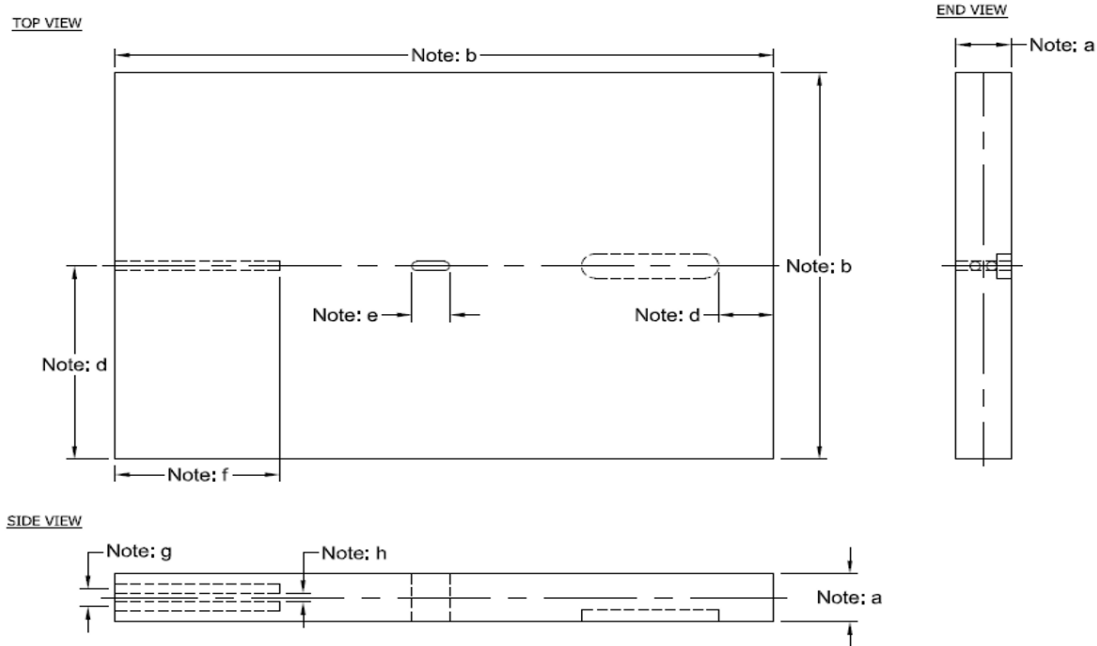
- Fracture mechanics only (MA IX)
- Cal Block
- ***NO*** Scanner Block
- Amplitude Fidelity Rule
- Essential Variables
- Saving Data, or not...

The FMC Cal Block and Managing Modes

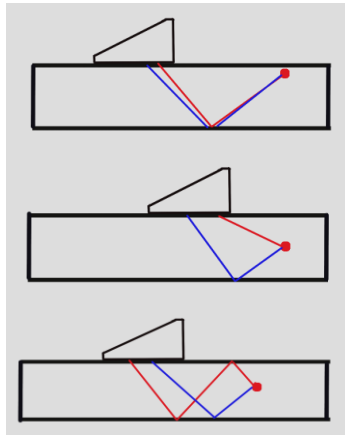
SDH – resolution

Through Wall Slot – Exam volume coverage

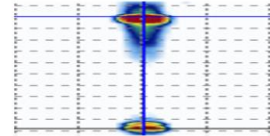
$\leq 11\%$ Notch – Sizing verification



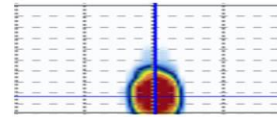
The Through Wall Slot



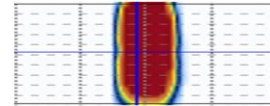
TT-TT



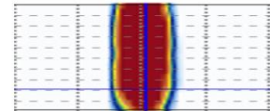
T-TT



TT-TTT



COMBINED



History 2013 to present

- *Applus shows up at Code Week*
- *OPG using a system for corrosion*
- *2015ish ASME splits WGUT to AUT*
- *Nov 2016 TG FMC splits and begins*
- *May 2017 FMC elevated to SWG*
- *Dec 2018 we hit the finish line*
- *July 1 2019 – Publication*

< 2 Years – How?

- *Interim web meetings*
- *Global collaboration (IIW, BINDT)*
- *Reported directly to SC V*
- *Very Talented and Dedicated group*
- *Presentations at every meeting*



Thank you!

any

Questions?